

Digital Wired Door Key (RN-RC400)

User's Guide



Patent application

NO. 10-1456214



MSIP-CRM-RSN-RN-RC400

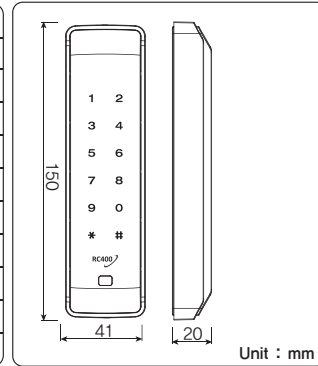
Thank you for purchasing the dual purpose RC400 Wired Digital Door Key / Digital Touch Pad.



1 COMPOSITION & SPECIFICATIONS

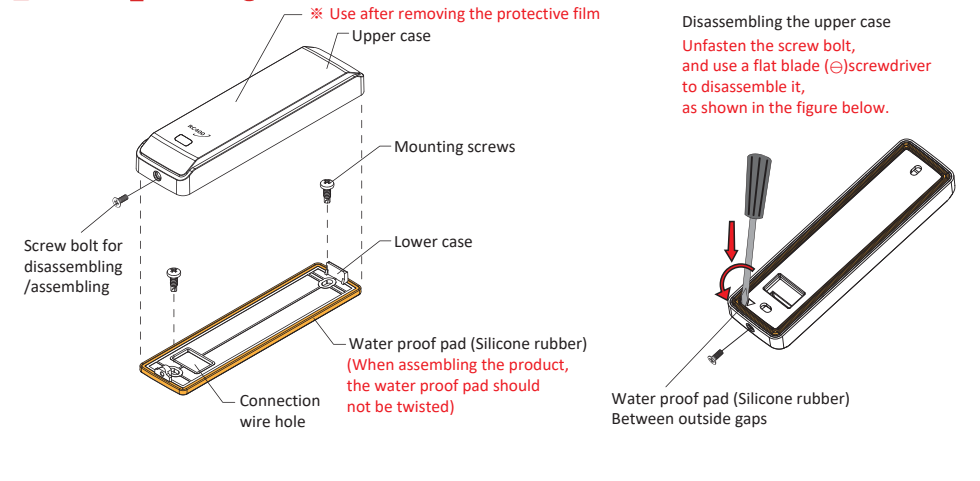
Composition	Wired Digital Door Key (RC400)	
	Wired Digital Door Key (RC400)	1EA
	Mounting screws (4x16)	2EA
	Mounting template	1EA
	Connection wire	1EA
User's Manual	1 copy	
Specification	Power supply	DC 12~30V, AC 12~24V
	Relay contact capacity	DC30V / 1A
	Operating temp	-20°C~50°C
	Type	ISO14443A(Mifare) / 13.56MHz
	Power consumption	300mA Under
	International Protection	IP54 (Recommend for Indoor Use)

2 DIMENSION



3 GENERAL INFORMATION

E : Error **✋** : Touch **⊙** : Action / Set



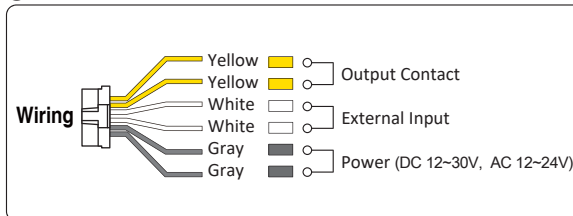
3 OPERATION CHECK & CAUTION

1. Be sure to connect DC12 ~ 30V / AC12 ~ 24V.
2. When it powers on, the LEDs will be displayed sequentially; once all LEDs have been displayed, "beep" sound is heard.
3. Since this system is capacitive touch type, it will not respond to a gloved hand.

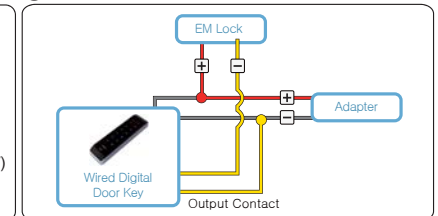
4 HOW TO USE

- 1) [Card Registration]
 $\text{①②③④} \Rightarrow \text{①②③④} \Rightarrow \# \Rightarrow \text{①} \Rightarrow \# \Rightarrow$ Access card (Serial registration is possible) $\Rightarrow \# \Rightarrow *$ (end)
 $\text{①②③④} \Rightarrow \text{①②③④} \Rightarrow \# \Rightarrow \text{①} \Rightarrow \# \Rightarrow$ Card address(0001~0500) \Rightarrow Card $\Rightarrow \# \Rightarrow *$ (end)
 Example) Serial registration : if the first address is [0100], next address is [0101] automatically increase.
- 2) [Password Registration]
 $\text{①②③④} \Rightarrow \text{①②③④} \Rightarrow \# \Rightarrow \text{②} \Rightarrow \# \Rightarrow$ Password(4digit) $\Rightarrow \# \Rightarrow *$ (end)
 (Serial registration)
- 3) [Card address Delete]
 $\text{①②③④} \Rightarrow \text{①②③④} \Rightarrow \# \Rightarrow \text{③} \Rightarrow \# \Rightarrow$ Card address (4digit or serial delete) $\Rightarrow \# \Rightarrow *$ (end)
- 4) [Contact Time]
 $\text{①②③④} \Rightarrow \text{①②③④} \Rightarrow \# \Rightarrow \text{⑥} \Rightarrow \# \Rightarrow$ 01~60 (01sec.~60sec.) $\Rightarrow \# \Rightarrow *$ (end)
 Example) 5's Setup : 0+5, 20's Setup : 2+0 (2sec at the time of initial release)
- 5) [All Card Delete]
 $\text{①②③④} \Rightarrow \text{①②③④} \Rightarrow \# \Rightarrow \text{⑥} \Rightarrow \#$ (end)
- 6) [All Password Delete]
 $\text{①②③④} \Rightarrow \text{①②③④} \Rightarrow \# \Rightarrow \text{⑦} \Rightarrow \#$ (end)
- 7) [Card or Password Delete]
 Card : $\text{①②③④} \Rightarrow \text{①②③④} \Rightarrow \# \Rightarrow \text{⑧} \Rightarrow \# \Rightarrow$ Access Card (Serial possible) $\Rightarrow \# \Rightarrow *$ (end)
 Password : $\text{①②③④} \Rightarrow \text{①②③④} \Rightarrow \# \Rightarrow \text{⑧} \Rightarrow \# \Rightarrow$ Password $\Rightarrow \#$ (Delete) $\Rightarrow *$ (end)
- 8) [Toggle mode contact change]
 $\text{①②③④} \Rightarrow \text{①②③④} \Rightarrow \# \Rightarrow \text{②②} \Rightarrow \# \Rightarrow$ Set value (⊙~①) $\Rightarrow \# \Rightarrow *$ (end)
 Set value - ⊙ : Normal , ① : Toggle mode (⊙ at the time of initial release)
- 9) [Operation mode setting]
 $\text{①②③④} \Rightarrow \text{①②③④} \Rightarrow \# \Rightarrow \text{③} \Rightarrow \# \Rightarrow$ Set value (⊙~①) $\Rightarrow \# \Rightarrow *$ (end)
 Set value - ⊙:NO, ①: NC (⊙ at the time of initial release)
- 10) [Illumination brightness setting]
 $\text{①②③④} \Rightarrow \text{①②③④} \Rightarrow \# \Rightarrow \text{①②} \Rightarrow \# \Rightarrow$ Set value (⊙~③) $\Rightarrow \# \Rightarrow *$ (end)
 Set value -⊙: Illumination OFF, ③: The highest degree of brightness (⊙ at the time of initial release)
 Set the brightness of the illumination at standby state. In case brightness of the illumination is set at OFF, when touch pad is pressed, number is displayed.
- 11) [System number change]
 $\text{①②③④} \Rightarrow \text{①②③④} \Rightarrow \# \Rightarrow *$ $\Rightarrow \# \Rightarrow \# \Rightarrow$ System number in use $\Rightarrow \# \Rightarrow$ system number to be changed $\Rightarrow \#$ (end)
 System Number: Refers to the number ①②③④ used to set menu.
- 12) [System Initialization]
 $\text{①②③④} \Rightarrow \text{①②③④} \Rightarrow *$ $\Rightarrow \# \Rightarrow$ Initialization \Rightarrow Exit after the LEDs blink. \Rightarrow (end)

5 CONTACT TIME

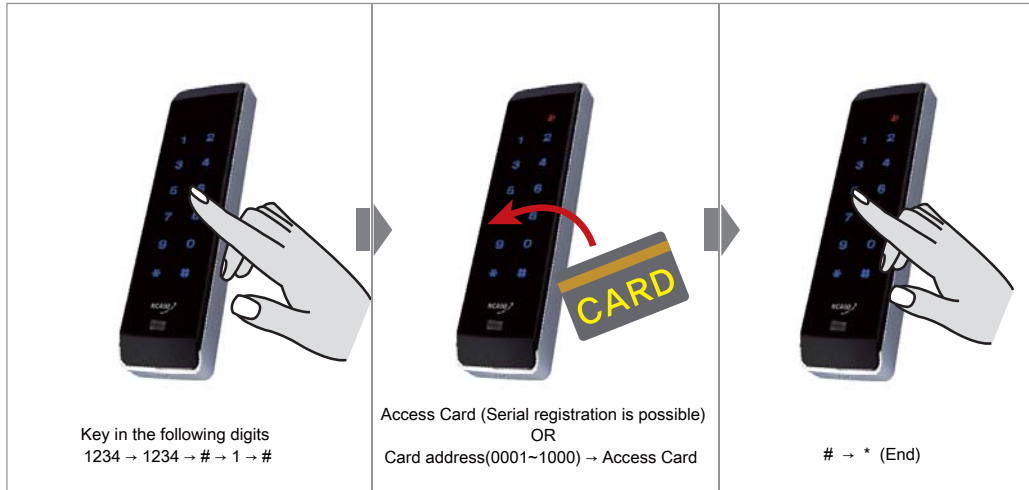


6 EM LOCK WIRING



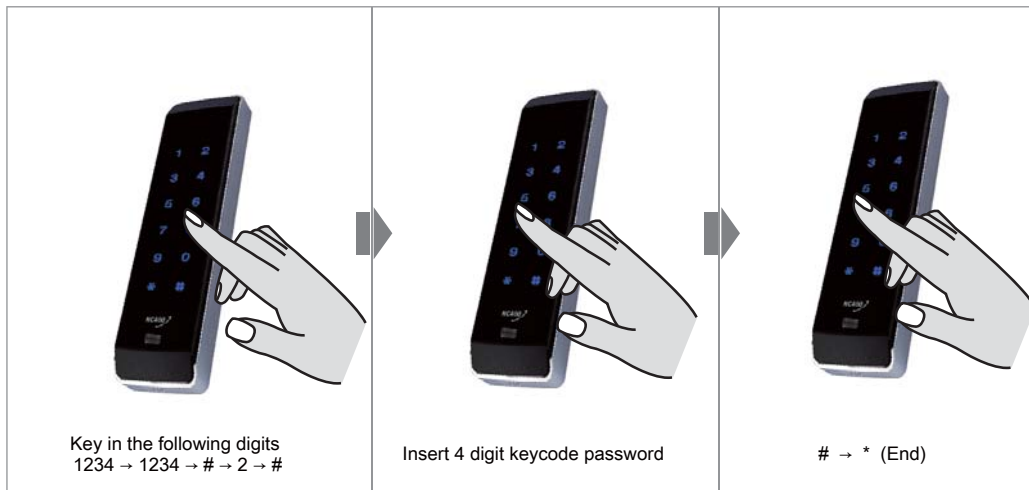


[Card registration] Card type : ISO 14443 (Mifare)



[Note] Serial registration (If the first address will be [0100], next address is [0101] automatically increase.)

[Password registration]

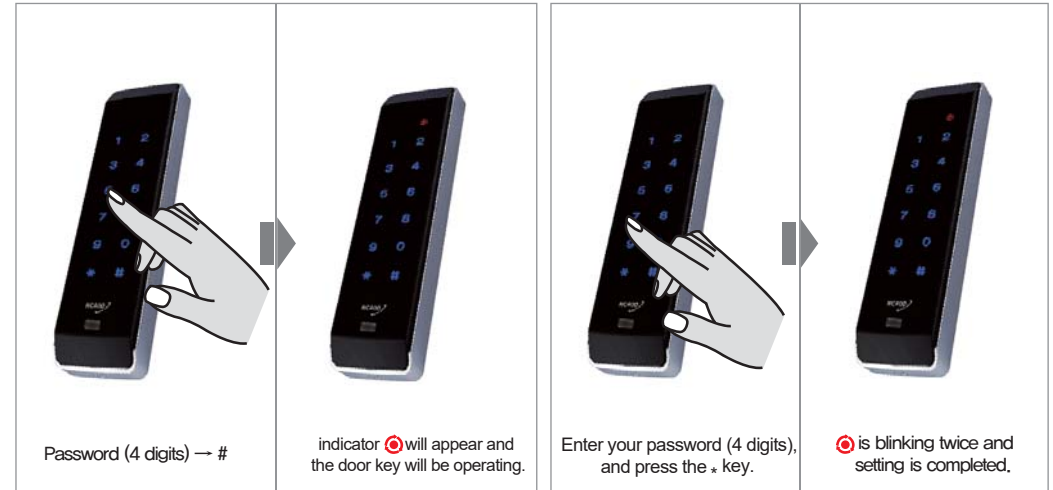


[Open a door]

Password (4 digits) ⇒ # (If more than 4 digit password is entered, just the last four digits should be identical (right) with your preset password to open the door.)

[How to block external input]

password (4 digits) -> *



[Note] Disconnect the input of white line which is external input. Door is opened and automatically released.

[WARNING & CAUTION]

